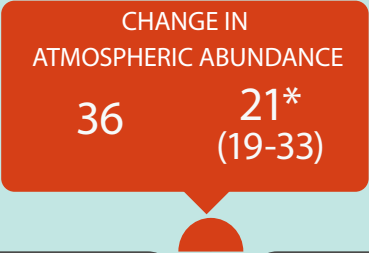
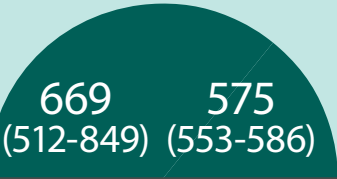


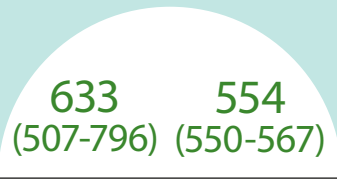
GLOBAL METHANE BUDGET 2010-2019

Bottom-up view (BU)
Top-down view (TD)

TOTAL EMISSIONS



TOTAL SINKS



120 (117-125)
115 (100-124)

211 (195-231)
228 (213-242)

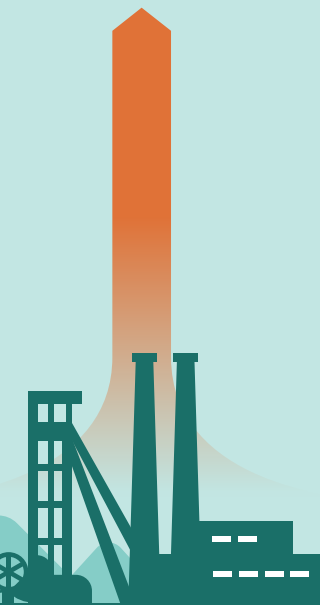
28 (21-39)
27 (26-27)

248 (159-369)
165 (145-214)

63 (24-93)
43 (40-46)

602 (496-747)
521 (485-532)

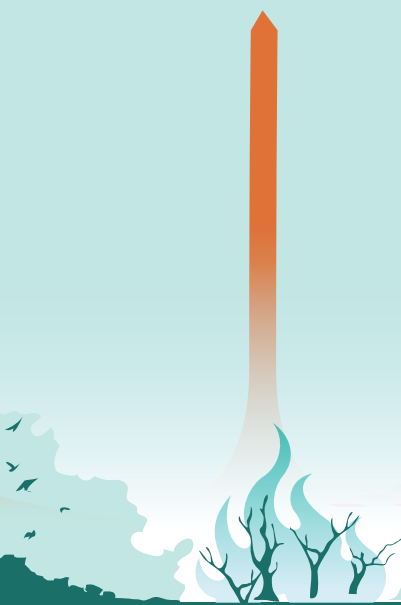
31 (11-49)
35 (35-36)



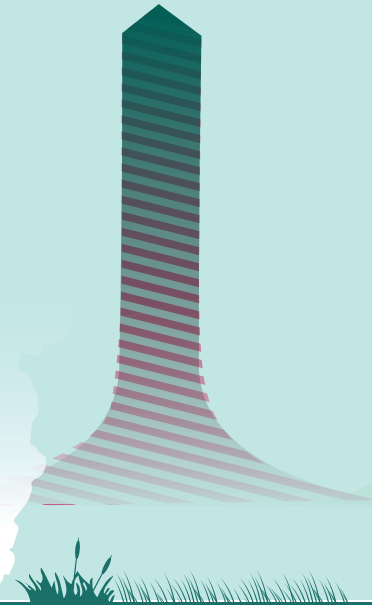
Fossil fuel production and use



Agriculture and waste



Biomass and biofuel burning



Combined wetland & inland freshwaters



Other natural emissions
geological, oceans, termites, wild animals, permafrost, vegetation



Sink from chemical reactions in the atmosphere

Sink in soils

EMISSIONS AND SINKS

In teragrams of CH₄ per year (Tg CH₄ / yr) average over 2009-2019

The observed atmospheric growth rate is 20.9 (20.1-21.7) Tg CH₄ / yr. The difference with the TD budget imbalance reflects uncertainties in capturing the observed growth rate.

Direct anthropogenic fluxes Natural fluxes Natural and indirect anthropogenic fluxes