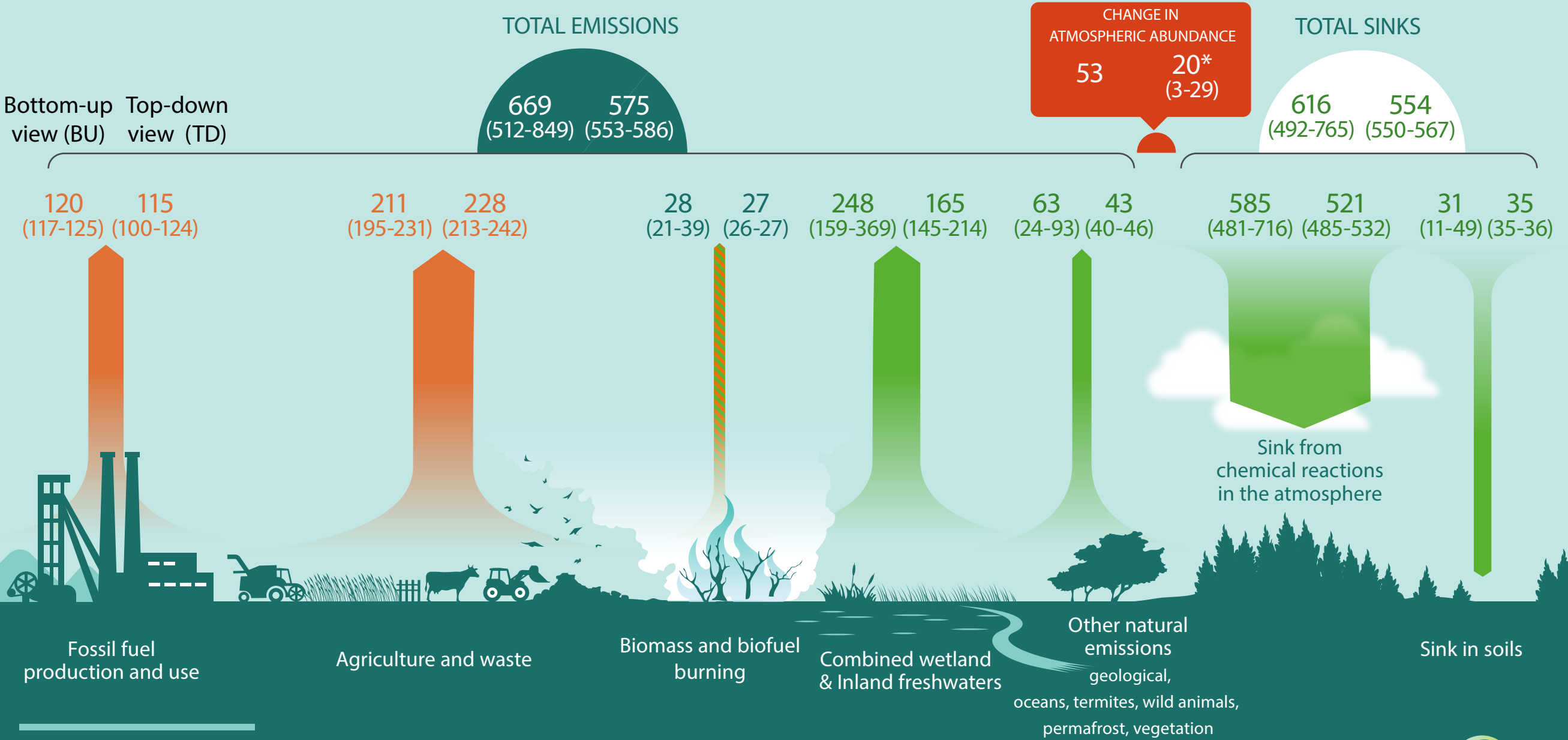


# GLOBAL METHANE BUDGET 2010-2019



## EMISSIONS AND SINKS

In teragrams of CH<sub>4</sub> per year (Tg CH<sub>4</sub> / yr) average over 2009-2019  
The observed atmospheric growth rate is 20.9 (20.1-21.7) Tg CH<sub>4</sub> / yr. The difference with the TD budget imbalance reflects uncertainties in capturing the observed growth rate.

 Anthropogenic fluxes     Natural fluxes     Natural and anthropogenic fluxes